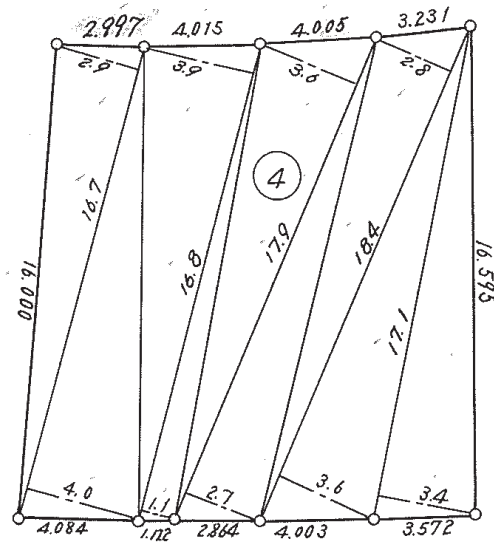


5-4

5-4 丈量図

$s = 1/300$



番号	底辺 (M)	高さ (M)	面積 (m <sup>2</sup> )
4	16.7	2.9	48.43
	"	4.0	66.80
	16.8	3.9	65.52
	"	1.1	18.48
	17.9	3.6	64.44
	"	2.7	48.33
	18.4	2.8	51.52
	"	3.6	66.24
	17.1	3.4	58.14
計			487.90
1/2			243.95