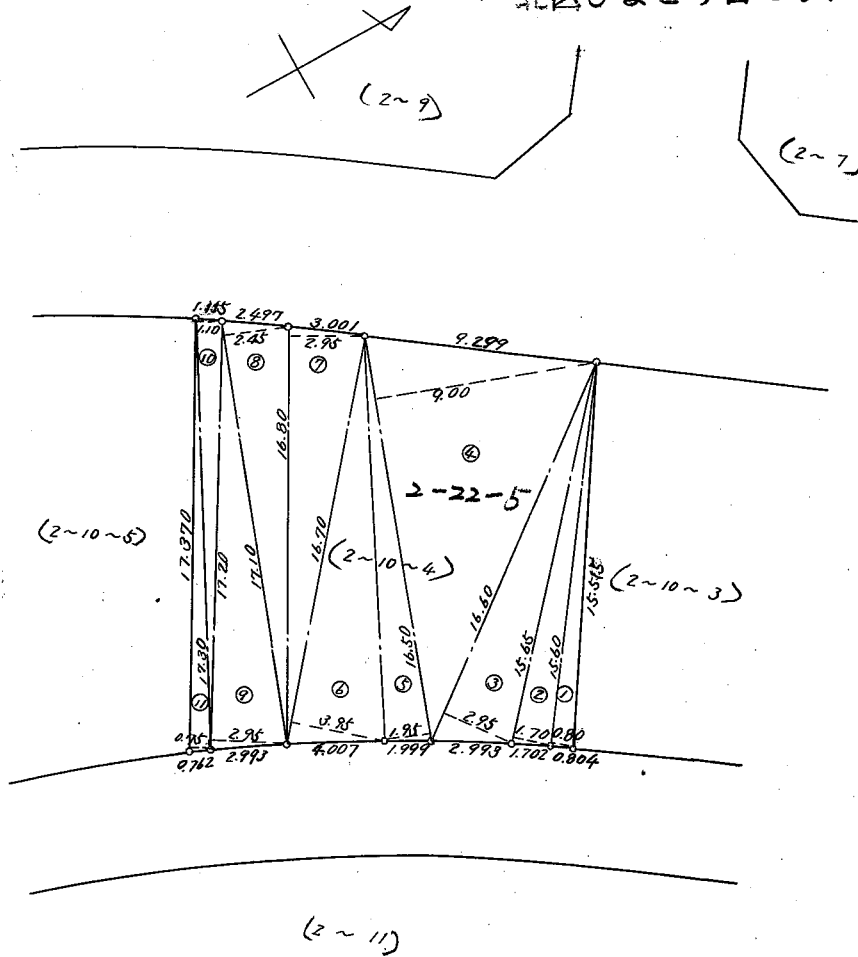


北区ひよどり台2丁目22番 5



| 番号 | 底辺 | 垂線 | 倍面積 |
|-----------------|-------|------|-----------------------|
| (2-10~4) 2-22-5 | | | |
| 1 | 15.60 | 0.80 | 12.4800 |
| 2 | 15.65 | 1.70 | 26.6050 |
| 3 | 16.60 | 2.95 | 48.9700 |
| 4 | 16.50 | 9.00 | 148.5000 |
| 5 | 16.50 | 1.95 | 32.1750 |
| 6 | 16.70 | 3.95 | 65.9650 |
| 7 | 16.80 | 2.95 | 49.5600 |
| 8 | 17.10 | 2.45 | 41.8950 |
| 9 | 17.20 | 2.95 | 50.7400 |
| 10 | 17.30 | 1.10 | 19.0300 |
| 11 | 17.97 | 0.75 | 13.0275 |
| 計 | | | 508.9675 |
| 1/2 | | | 254.47 m ² |

神戸市土木局宅地開発課