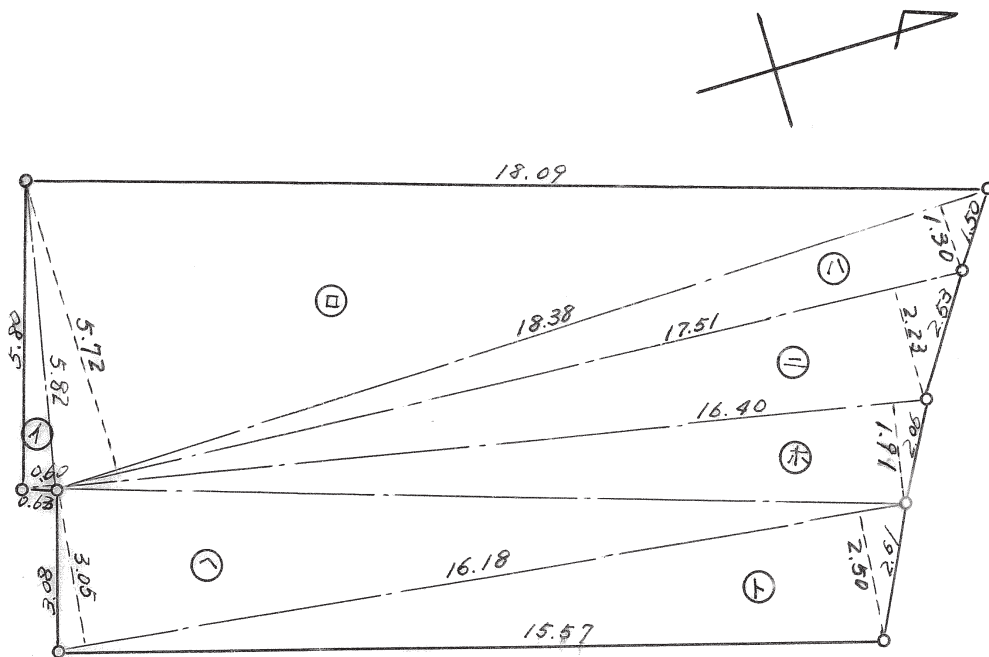


B-10 ⑤ 丈量図  $S = 1/300$



記号	算式	倍面積	面積
①	$5.82^{\text{間}} \times 0.60^{\text{間}}$	3.4920	
②	$18.38 \times 5.72$	105.1336	
③	$18.38 \times 1.30$	23.8940	
④	$17.51 \times 2.23$	39.0473	
⑤	$16.40 \times 1.91$	31.3240	
⑥	$16.18 \times 3.05$	49.3490	
⑦	$16.18 \times 2.50$	40.4500	
計		292.6899	146.34 <sup>坪</sup>